

# **BLIND SPOT RADAR SYSTEM**

## **CHANGE LANES WITH CONFIDENCE**



Eliminate blind spots and change lanes with confidence with the Spotto BSM-MW blind spot radar.

## **SPECIAL \$900\* FITTED**

**CONTACT OUR DEALERS TO FIND OUT MORE**  
**OFFER ENDS MAY 31, 2021**



**WESTERN STAR TRUCKS®**

# CHANGE LANES SAFELY. WITH CONFIDENCE.

truck's blind spots

ts to objects in the system's

Avoid collisions in your truck's blind spot with Spotto's BSM-MW blind spot radar.

The blind spot monitoring system scans the area alongside the truck, at all times and in all weather conditions. Drivers will be alerted, visually and audibly, to objects in the system's detection zone, assisting with the prevention of collisions when changing lanes or turning at intersections.\*

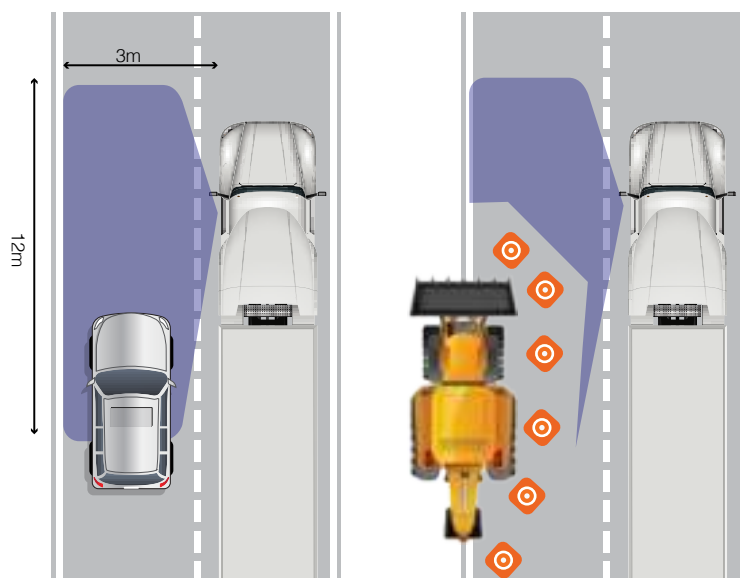


SIDE FACING RADAR

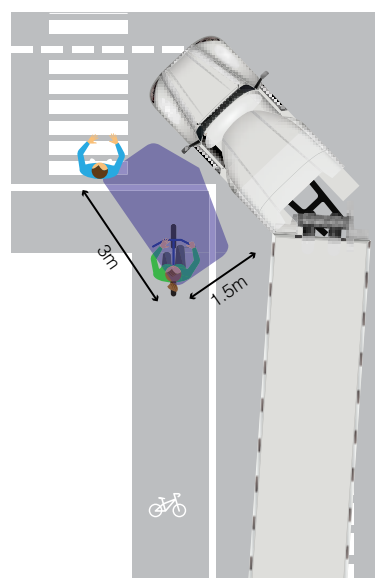


BLIND SPOT INDICATOR

## ADVANCED FUNCTIONALITY. SIMPLIFIED.



At speeds **above 30km/h**, the detection zone extends **3m** into the adjacent lane and up to **12m** alongside the truck and forward of the bonnet. The intelligent algorithms differentiate between moving and stationary objects, ignoring unwanted objects such as parked vehicles, barriers, and guard rails, minimising false alerts.



At speeds **below 30km/h**, the turn-assist detection zone reduces to **1.5m x 3m**, alerting drivers to all objects, both moving and stationary, including pedestrians and cyclists.